



Practice Management System

Bringing Peace to Your Patients' Minds

PRODUCT SPECIFICATIONS

Power

- Battery Powered Control Unit
 - Dedicated Rechargeable Battery
 - 14.0 hrs of Continuous Play
 - 8.0 hrs of Recommended Charge Time for Full Cycle
- AC Powered Control Unit
 - 100—240 VAC, 50-60Hz
 - 500mA (RMS) max. @ 120VAC
 - 250mA (RMS) max. @ 240VAC

Approximate Weight

- Control Unit: 3.5 oz, (100 g)
- Earphones: 0.4 oz, (12 g)
- Charging Unit: 5.6 oz, (160 g)

Approximate Dimensions: (L x W x H)

- Control Unit: (5.5 x 2.2 x 2.2)inch
(140 x 56 x 56) mm
- Earphones: (36.0 cord length) inch
(915 cord length) mm
- Charging Unit: (2.8 x 2.0 x 1.3)inch
(72 x 50 x 32) mm

CARE AND MAINTENANCE

• Cleaning

- DO NOT REUSE EARPHONE TIPS.
- DO NOT IMMERSE IN CLEANER.
- DO NOT SPAY CLEANER DIRECTLY ONTO CONTROL UNIT OR EARPHONES
- Use a disinfectant common to the dental office, such as an Isopropyl-based cleaner.
- Using a soft cloth, wipe-down all exposed surfaces of Control Unit, Cable & Earphones.
- Ensure Earphone tips are free from debris.

• Recharging

- Plug charging unit into wall.
- Plug connector into Control Unit.
- Allow 8 hours for full cycle charge.

• Storing

RELAX.....You're at the Dentist.TM



Practice Management System

Bringing Peace to Your Patients' Minds

Use & Operating Instructions

Earphone & Tip

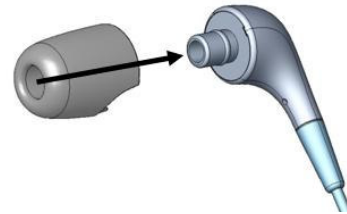
- **INSTALL NEW EARPHONE TIPS BEFORE USING**
- **Insertion**
 - Insert Earphone to a depth into the ear canal such that it remains in place without any external force, yet remains comfortable to the patient.
- **Removal**
 - Gently twist and pull Earphone from ear canal.
 - Discard Earphone Tip
 - **DO NOT REUSE EARPHONE TIPS**

Control Unit

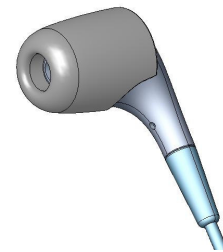
- **To Turn On**
 - Press the ►|| touchpad on the Control Unit Face the **Green** indicator LED will illuminate.
- **To Control the Sound**
 - Use the touchpads located on the Control Unit Face to operate the Audio Playback and Volume controls.
 - **To Pause the Audio**
 - Press the ►|| touchpad, the Green LED will flash
 - To resume, press the ►|| touchpad, the Green LED will remain lit
 - **For Volume Control**
 - Press the + to Increase Volume
 - Press the - to Decrease Volume
 - **To Advance Audio Tracks**
 - While a track is playing, press the ►►| touchpad to *Advance* to the next Audio Track
- **To Turn Off**
 - Press and Hold the ►|| touchpad on the keypad until the **Green** indicator LED remains off.

Earphone Tip Installation

- Align holes of tip and earphone and push tip over earphone mounting post
- To remove, simply pull off the tip in the reverse direction



Earphone with Tip Installed



Control Unit Face



RELAX.....You're at the Dentist.TM



Practice Management System

Bringing Peace to Your Patients' Minds

TROUBLE SHOOTING

The b-Calm control unit is equipped with a reset switch should the unit fail to function. Before attempting a system reset, first insure the battery is charged by plugging the unit into the charger for a period of 8 hours.

To *Reset* the control unit:

- Insert a straightened paper clip into the small hole found on the right hand side of the control unit body.
- The paper clip should strike the reset switch located a short distance below the surface.
- After the switch has been depressed remove the paper clip and resume normal use

For additional technical support, see www.b-calmdental.com or contact your sales representative.

PRODUCT SUPPORT

To learn more about the *b-Calm*[™] Practice Management System, contact your local distributor. To locate the distributor nearest you, please visit our website at www.b-calmdental.com.

ORDERING INFORMATION

To order a *b-Calm*[™] Practice Management System, or Replacement Tips, go to www.b-calmdental.com or contact your local dental products distributor.

B-Calm llc.
1451 NE 69th P1 Suite 40
Ankeny, IA 50021

© 2007 b-Calm, Inc. All Rights Reserved

RELAX.....You're at the Dentist.[™]